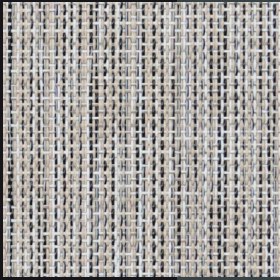
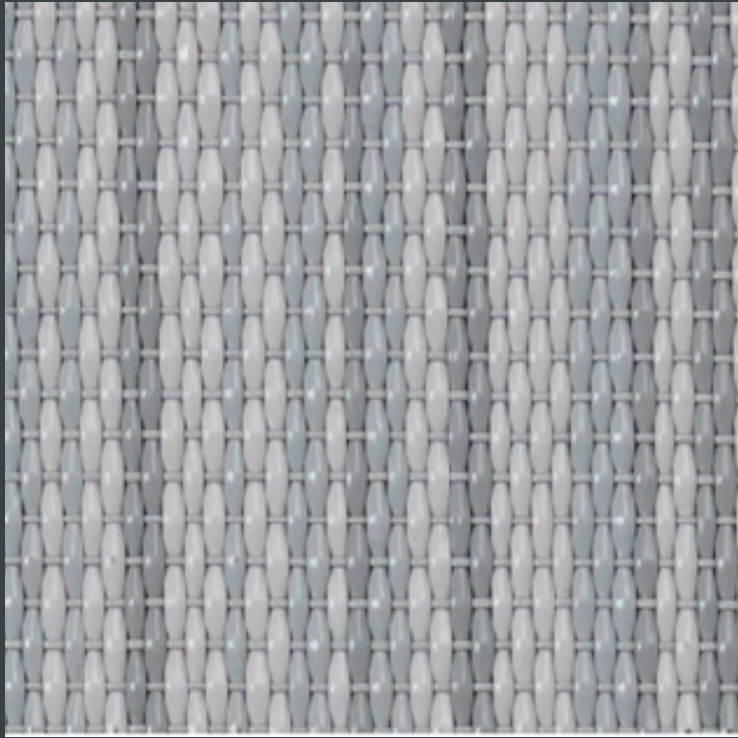
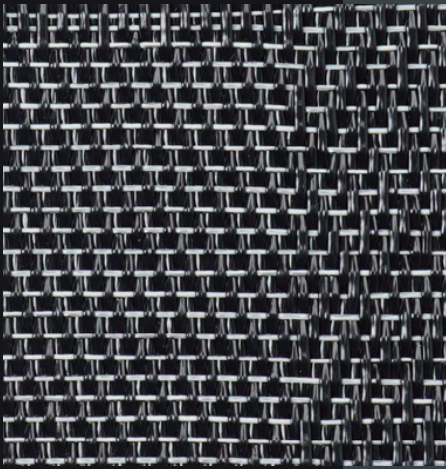


elite



**CATÁLOGO
iNfeel Woven**



iNfeel

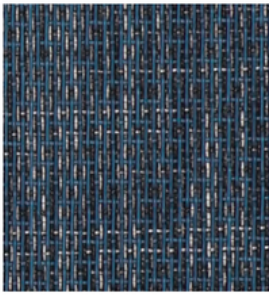
INFEEL WOVEN

SUELO DE VINILO WOVEN & REVESTIMIENTOS DE PAREDES & ALFOMBRA & ALFOMBRA ANTIFATIGA

El material vinílico de Woven ofrece el aspecto y la sensación del sisal natural, la lana, el yute, la hierba marina y la madera, pero fabricados de vinilo resistente, duradero y fácil de limpiar, es una alternativa perfecta para pisos lavables para hogares, oficinas, tiendas, restaurantes y hoteles. Desde interiores de casas hasta oficinas y hoteles, los pisos y alfombras de Woven ofrecen soluciones prácticas y resistentes con muchos estilos.



INFEEL WOVEN · DELUX



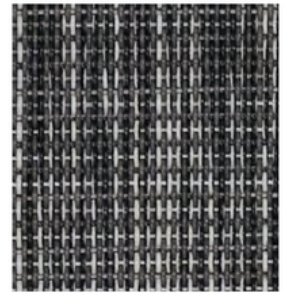
ECO-21006



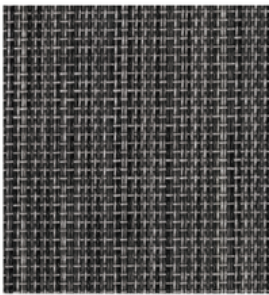
ECO-21018



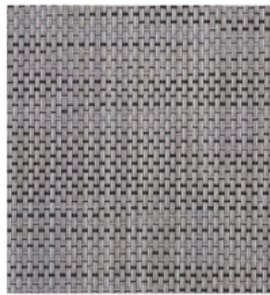
ECO-21019



ECO-21020-1



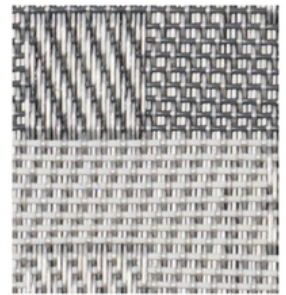
ECO-21017



ECO-21039



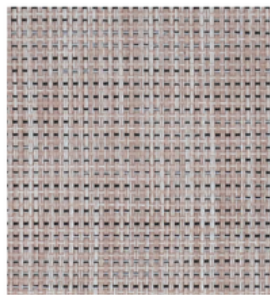
ECO-21057



ECO-21032-2



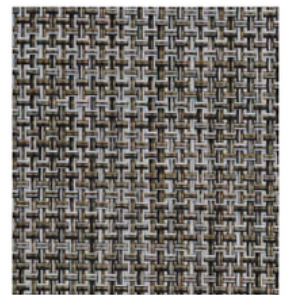
ECO-21049



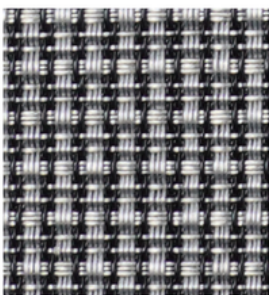
ECO-21055



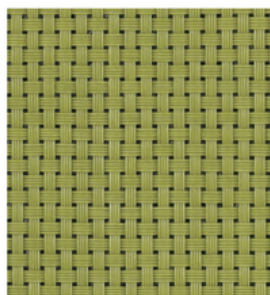
ECO-22012



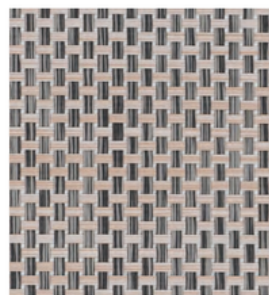
ECO-33001



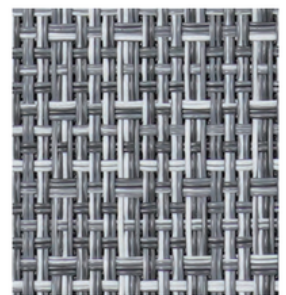
ECO-31006



ECO-44044



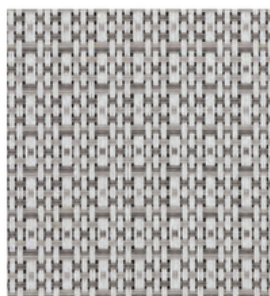
ECO-44016



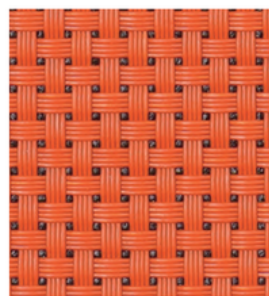
ECO-44038



ECO-44039



ECO-44037



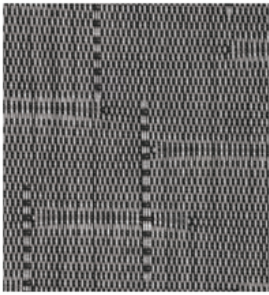
ECO-44043



ECO-44042



INFEEL WOVEN · JACQUARD



ECO-8014H-4   



ECO-8014H-21   



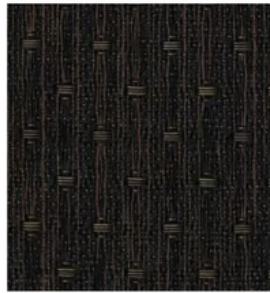
ECO-8014H-18   



ECO-8014H-5   



ECO-8091H   



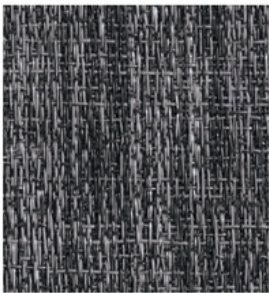
ECO-8019H   



ECO-8094H   



ECO-8095H   






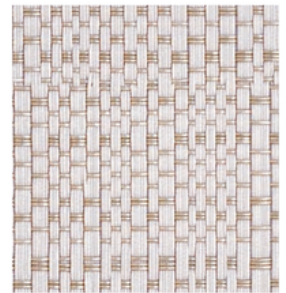
ECO-8089H-1   



ECO-8082H   



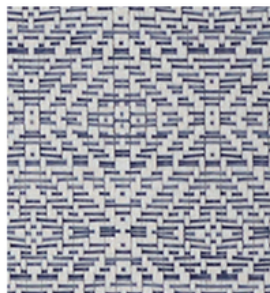
ECO-8087H   



ECO-8060H  



ECO-8097H  



ECO-8093H  



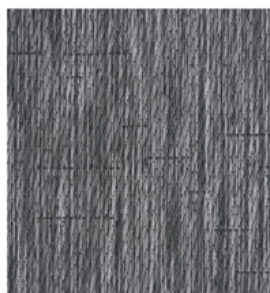
ECO-8097H-2  



ECO-8084H   



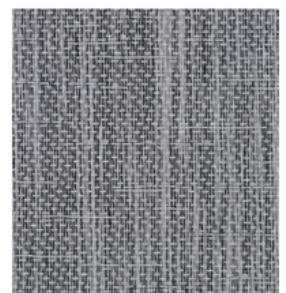
ECO-8026H   




ECO-8056H   



ECO-8013H   

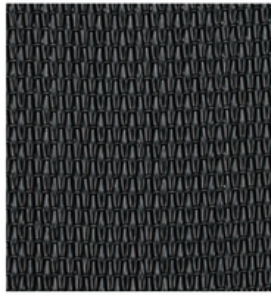


ECO-8012H   

INFEEL WOVEN · CLASSIC



ECO-11002BS



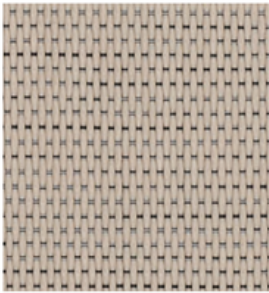
ECO-11010BS



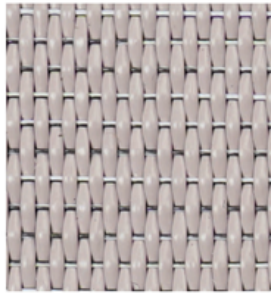
ECO-11030BS



ECO-11048BS



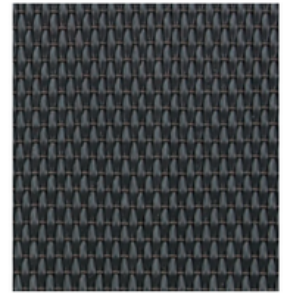
ECO-11015BS



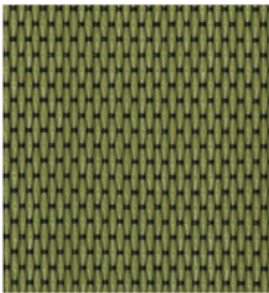
ECO-11031BS



ECO-11018BS



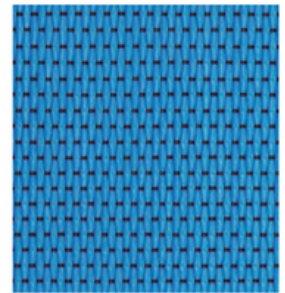
ECO-11008BS



ECO-11020BS



ECO-11047BS



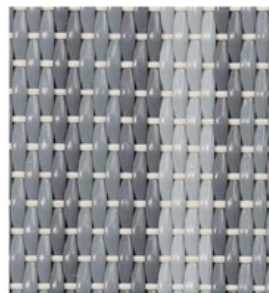
ECO-11003BS



ECO-11025BS



ECO-11033BS



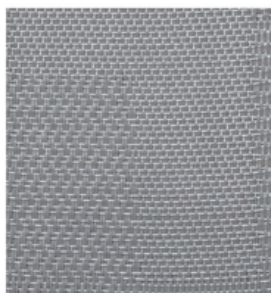
ECO-11042BS



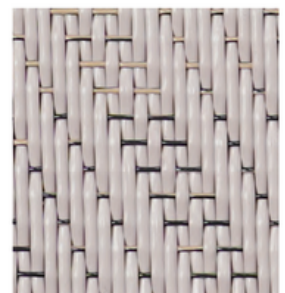
ECO-11037BS



ECO-11038BS



ECO-11036BS-2



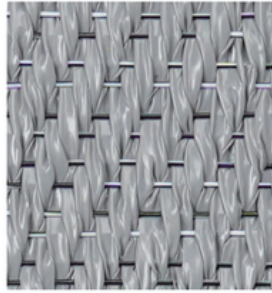
ECO-11029BS



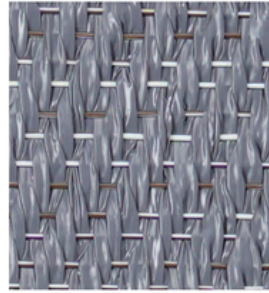
INFEEEL WOVEN · ELEGANT



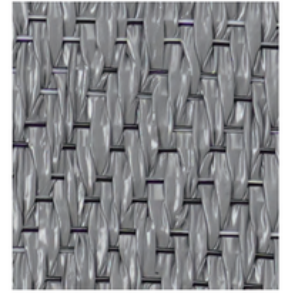
ECO-51005BP  



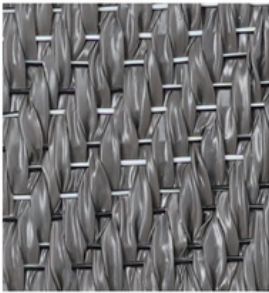
ECO-51026BP  



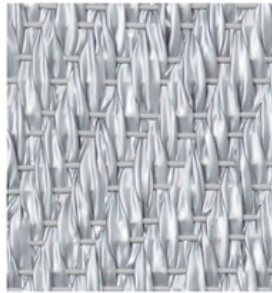
ECO-51028BP  



ECO-51019BP  



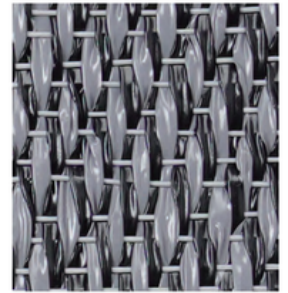
ECO-51008BP-2  



ECO-51023BP  



ECO-52028BP  



ECO-52039BP  



ECO-52021BP  



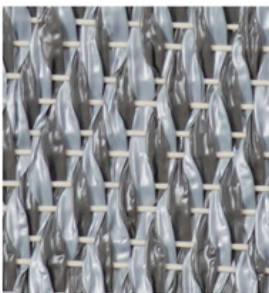
ECO-52037BP  



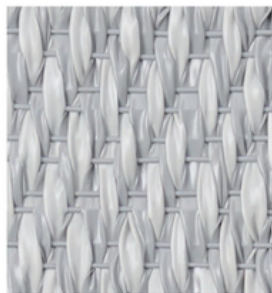
ECO-52016BP  



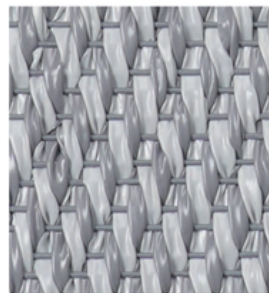
ECO-52031BP  



ECO-52002BP  



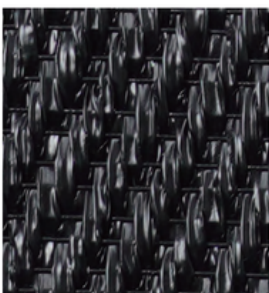
ECO-52011BP  



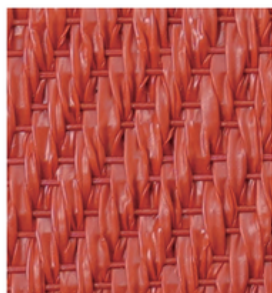
ECO-52015BP  



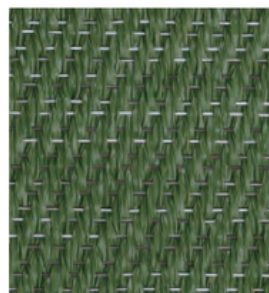
ECO-52041BP  



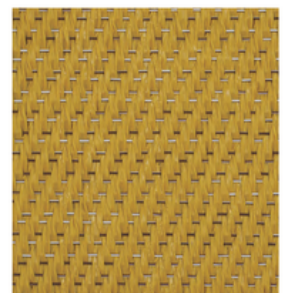
ECO-51007BP-2  



ECO-51012BP  

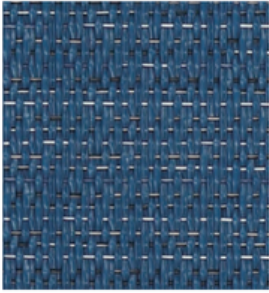


ECO-51010BP  

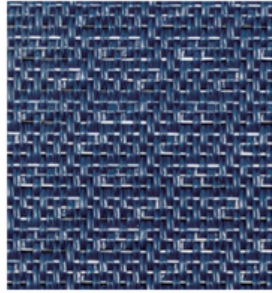


ECO-51018BP  

INFEEL WOVEN · FANTASY



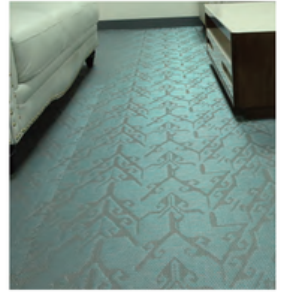
ECO-6033S



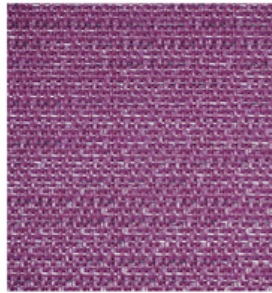
ECO-6003S



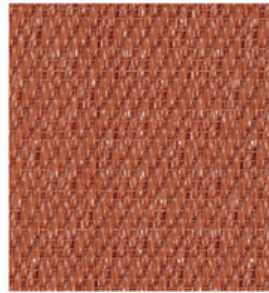
ECO-6029S



ECO-6028S



ECO-6042S



ECO-6043S



ECO-6040S



ECO-6036S



ECO-6038S



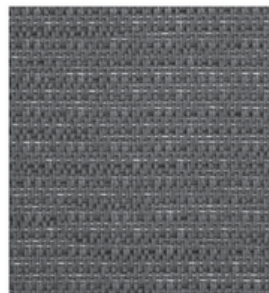
ECO-6031S



ECO-6017S-4



ECO-6001S



ECO-6002S



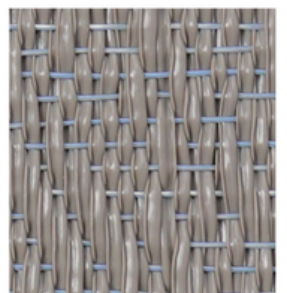
ECO-6027S



ECO-6041S



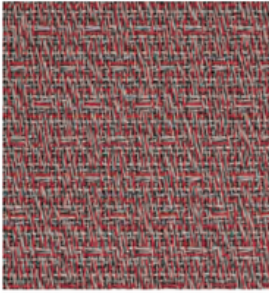
ECO-6046S



ECO-6045S



INFEEL WOVEN · SILK ROAD



ECO-8030H



ECO-8083H



ECO-8054H



ECO-8081H



ECO-8027H



ECO-8029H-1



ECO-8029H



ECO-8091H



Note:



Baldosas de vinilo Woven



Bobinas de vinilo Woven



Patrones

El suelo vinílico Woven es un concepto de suelo creativo y contemporáneo basado en varias formas diferentes de baldosas. Los diseños de sus patrones variarán según la elección de los colores, las direcciones de los hilos y las direcciones de la luz.



TRIANGLE



PLANKS



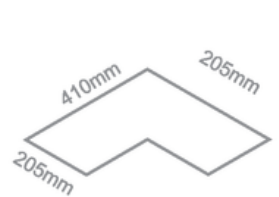
HEXAGONE



DECO

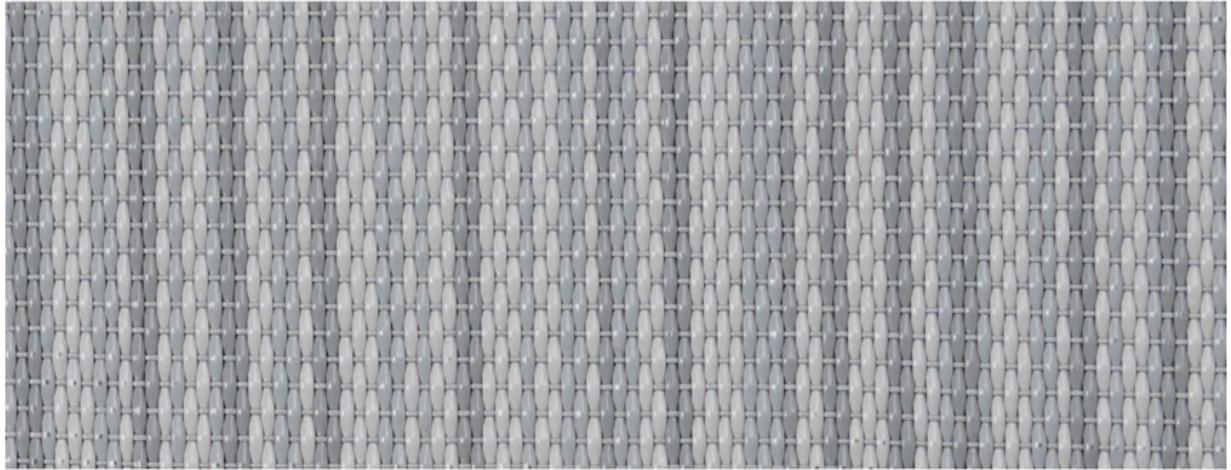


SCALE

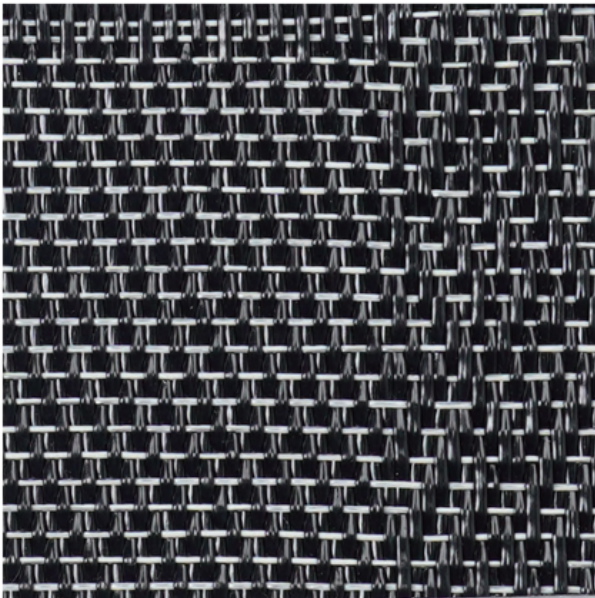


WING

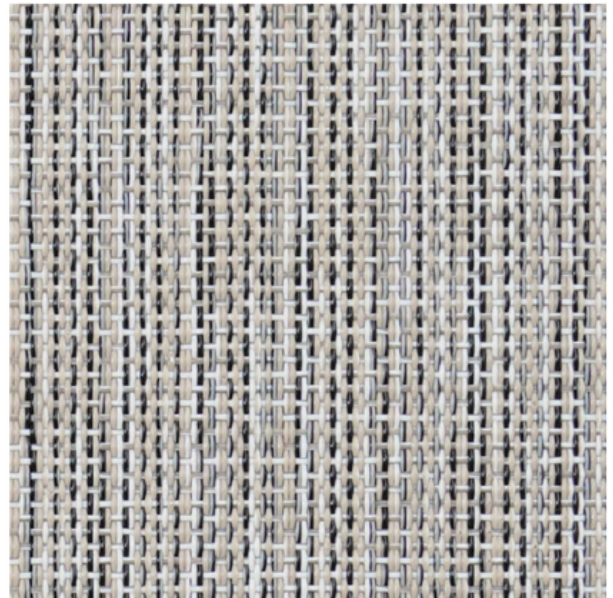
DIFERENTES BASES



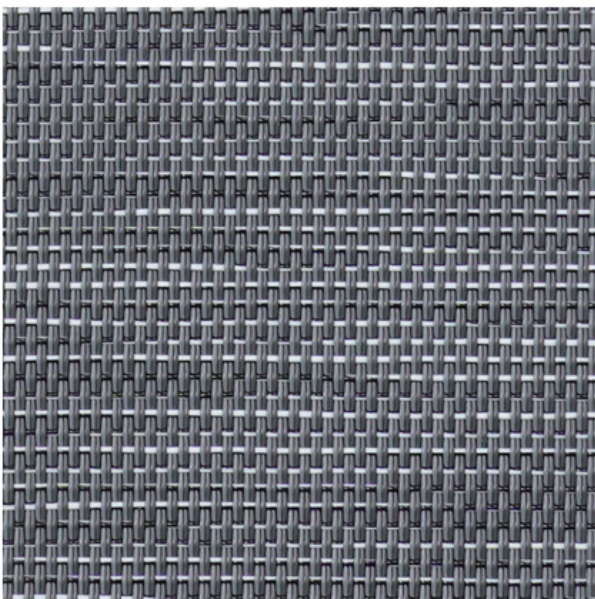
Baldosas de vinilo Woven



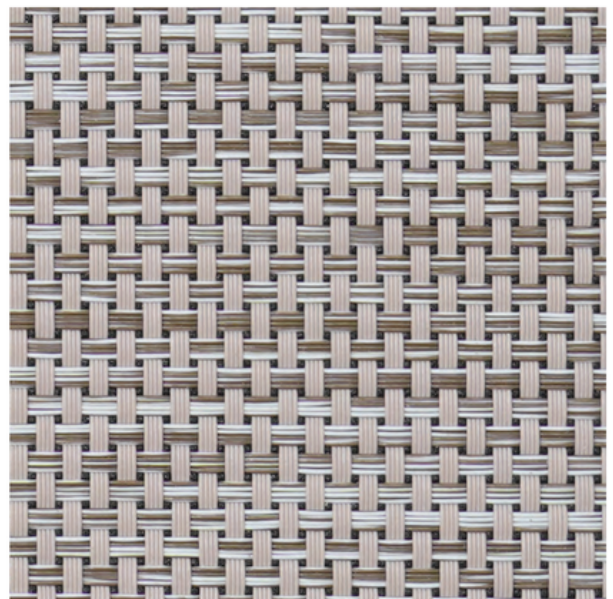
Base PVC para bobinas



Base PVC Foam para alfombras



Revestimiento de pared con base no tejido



















Revestimiento de pared con respaldo no tejido



INFORMACIÓN TÉCNICA

INFORMACIÓN TÉCNICA

	Norma	Bobinas	Losetas	Revestimiento de pared	Alfombra
 Peso	ISO 8543	2.7-3.1kg/m ²	3.2-3.8kg/m ²	800-1300g/m ²	1.5-3kgs/m2
 Espesor	ISO 1765	2.5mm-2.8mm	3.5mm	1mm-1.3mm	1.5-4mm
 Largo	EN 426	20-25m	-	20-25m	-
 Ancho	EN 426	2m	-	2m	2m
 Dimensión de la loseta	EN 994	-	50x50cm	-	-
 Estabilidad dimensional	ISO 2551	<0.25%	<0.25%	<0.25%	<0.25%
 Curvatura	EN 434	<2mm	<2mm	<2mm	<2mm
 Silla con ruedas	EN 985	Uso continuo	Uso continuo	-	Uso continuo
 Voltaje corporal	ISO 1815	≤2.0KV	≤2.0KV	≤2.0KV	≤2.0KV
 Resistencia térmica	ISO 8302	Adecuado para calefacción con suelo radiante	Adecuado para calefacción con suelo radiante	-	Adecuado para calefacción con suelo radiante
 Desgaste del color por la luz solar	ISO 105-B02	>6	>6	>6	>6
 Propiedad antideslizante	EN 13893	>0.3	>0.3	-	>0.3
 Aislamiento acústico de impacto	EN ISO 10140	11-12dB	11-12dB	11dB	-
 Reacción al fuego	EN 13501-1	Bfl-s1	Bfl-s1	Bfl-s1	Bfl-s1
 Absorción acústica	EN ISO 354	-	0.05	-	-
 Certificado CE	EN 14041, EN 15114	NO.EC.1282.OA140305.AYD0738			
Densidad del humo	ASTM E662	<450	<450	<450	<450
Prueba de alcance	(REACH)1907/2006	NO.200907002SHF-006			
Certificado ISO9001	ISO 9001:2008	NO.04514Q20096R05			
Certificado ISO14001	ISO 14001:2004	NO.04514Q20029R05			
Prueba del contenido de formaldehído	ASTM D6007-14	NO.191106006SHF-004			

WELCOME TO THE REVOLUTION

elite

Distribuidor exclusivo EMEA

www.holaelite.com/infeel-woven